

LEISTER

PROCESS HEAT

The suitable nozzle for every application.

Air heaters and hot air blowers

LHS 15
Ø 21.3 mm



Angled nozzle 90°, Ø 12 mm
Article No: 107.152



Sieve reflector, 20 x 35 mm
(other dimensions available)
Article No: 107.310



Tubular nozzle, Ø 10 mm
(other dimensions available)
Article No: 107.145



Wide slot nozzle, 40 x 5 mm, angulated
(other dimensions available)
Article No: 105.548



Flange connector, Ø 40 mm
Article No: 107.282



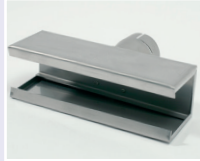
Wide slot nozzle 20 x 2, length 55 mm
(other dimensions available)
Article No: 105.559

LHS 15
Ø 21.3 mm

LHS 21
Ø 36.5 mm



Sieve reflector, 34 x 50 mm
(other dimensions available)
Article No: 107.308



Shell reflector, 150 x 25 mm
Article No: 106.132



Wide slot nozzle, 100 x 4 mm
(other dimensions available)
Article No: 108.078



Sieve reflector, 20 x 35 mm
(other dimensions available)
Article No: 107.309



Spoon reflector, 25 x 30 mm
Article No: 107.314



Extension tube, 210 x Ø 36.5 mm
Article No: 107.251

LHS 21
Ø 36.5 mm

LHS 41 / MISTRAL
Ø 50 mm



Wide slot nozzle, 70 x 10 mm
(other dimensions available)
Article No: 107.258



Wide slot nozzle, 150 x 12 mm
(other dimensions available)
Article No: 107.270



Hinged reflector, 125 x 22 mm
Article No: 107.330



Extension tube, 160 x Ø 36.5 mm
Article No: 107.255



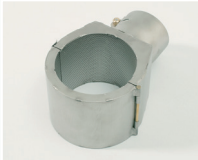
Flange connector, Ø 70 mm,
with clamps
Article No: 107.254



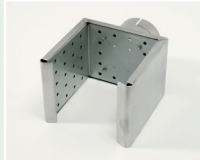
Angled nozzle, 106 x 162 mm
Article No: 107.256

LHS 41 / MISTRAL
Ø 50 mm

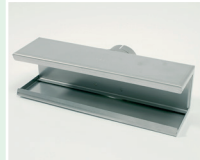
LHS 41 / MISTRAL
Ø 50 mm



Hinged reflector, 70 x 70 mm
Article No: 107.331



Shell reflector, 70 x 75 mm
(other dimensions available)
Article No: 107.327



Shell reflector, 45 x 250 mm
Article No: 107.340



Wide slot nozzle, 150 x 6 mm
(other dimensions available)
Article No: 106.060



Tubular nozzle, 590 x 420 x 1.7 mm
(other dimensions available)
Article No: 107.257



Wide slot nozzle, 100 x 4 mm
Article No: 106.057

LHS 41 / MISTRAL
Ø 50 mm

LHS 61 S / HOTWIND
Ø 62 mm



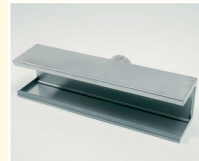
Wide slot nozzle, 300 x 4 mm
(other dimensions available)
Article No: 107.262



Tubular nozzle, 456 x 306 x 3 mm
(other dimensions available)
Article No: 105.919



Sieve reflector, 70 x 75 mm
(other dimensions available)
Article No: 107.329



Shell reflector, 400 x 65 mm
(other dimensions available)
Article No: 106.174



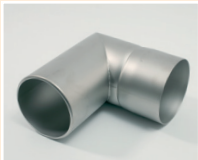
Round nozzle, Ø 40 mm
Article No: 107.245



Round sieve nozzle, Ø 150 mm
Article No: 107.335

LHS 61 S / HOTWIND
Ø 62 mm

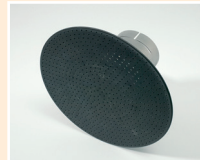
LHS 61 L / VULCAN
Ø 92 mm



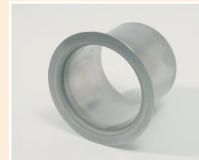
Angled nozzle, 175 x 175 mm
Article No: 107.269



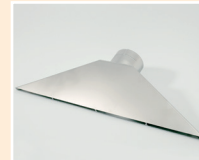
Tubular nozzle, 1550 x 1350 x 1.1 mm
(other dimensions available)
Article No: 106.033



Round sieve nozzle, Ø 260 mm
Article No: 107.276



Flange connector, Ø 120 mm
Article No: 125.318



Wide slot nozzle, 600 x 9 mm
(other dimensions available)
Article No: 106.026



Shell reflector, 370 x 160 mm
Article No: 107.341

LHS 61 L / VULCAN
Ø 92 mm

LHS 91
Ø 161 mm



Extension tube, 400 x Ø 100 mm
Article No: 107.233



Wide slot nozzle, 500 x 15 mm
(other dimensions available)
Article No: 107.235



Round nozzle, Ø 100 mm
Article No: 107.230



Wide slot nozzle, 1600 x 8 mm
(other dimensions available)
Article No: 105.856

LHS 91
Ø 161 mm

For further standard products ask your Leister sales partner. Customised versions upon request.